

REGISTRATION

\$435 Fee. Group rate (3 or more) must be mailed/faxed together \$410. Deadline for registration is 3 weeks prior to course. Registration accepted after deadline on a space available basis. Cancellation accepted until 2 weeks before course, minus an administration fee of \$75. **NO REFUNDS WITHIN 2 WEEKS OF COURSE.**

Please make check payable and return to:

Education Resources, Inc.

266 Main St., Suite 12 • Medfield, MA 02052
(508) 359-6533 or 800-487-6530 (outside MA)
FAX (508) 359-2959
www.educationresourcesinc.com
Enrollment is limited

SOFFI Method/Ross

NAME _____

ADDRESS _____

CITY/STATE/ZIP _____

PHONE (home) () _____

PHONE (work) () _____

CELL () _____

Needed in the event of an emergency scheduling change

EMAIL _____

Please clearly print your email address for course confirmation

EMPLOYER _____

DISCIPLINE SPECIALTY _____

HOW DID YOU LEARN ABOUT THIS COURSE _____

ERI Rewards. I am registering for my 4th course since January 2007 and applying \$100 credit to the tuition.

Sep/NJ

Oct/NE

Education Resources, Inc. reserves the right to cancel any course due to insufficient registration or extenuating circumstances. Please do not make non-refundable travel arrangements until you have called us and received confirmation that the course will be held. We are not responsible for any expenses incurred by participants if the course must be cancelled.

I have read your refund policy above and understand.

Cardholder's name & billing address with zip code if different from above.

Amount to be charged _____

Signature _____

I hereby authorize you to charge my: VISA MC DISCOVER

Exp. Date _____ CVV2 code _____
(last 3 digits on back of card)

FACULTY

Erin Ross, Ph.D. is the creator of the SOFFI MethodSM 2008 currently recommended by the National Association of Neonatal Nurses to be used in conjunction with their new feeding guidelines and she is the proprietor of Feeding FUNDamentals, LLC. Dr. Ross received her Master's degree in Speech and Language Pathology in 1988 and received her Doctoral degree in Clinical Sciences – Health Services Research from the University of Colorado in 2007. Dr. Ross is currently a Clinical Instructor in the School of Medicine, Department of Pediatrics, at the University of Colorado Denver, and works in the NICU within several HealthONE hospitals and at the SOS Feeding Solutions clinic in Denver, Colorado. Dr. Ross is on the faculty of Rocky Mountain University of Health Professions. She has specialized clinically in the development of feeding skills in medically fragile children for over 20 years, and her research focuses on the etiology and treatment of feeding and growth problems in infants and children. Dr. Ross is the President and CEO of Feeding FUNDamentals, LLC.

Disclosure: Financial: Erin Ross receives a honorarium from ERI, is a paid consultant for Nestle Infant Nutrition (Gerber division) and a paid speaker for STAR Institute for Sensory Processing Disorder. Non-Financial: She is an unpaid Medical Professional Council member for Feeding Matters (formerly P.O.P.S.I.C.L.E.); and Intellectual Property Owner, SOFFI MethodSM. This presentation will focus exclusively on the SOFFI Approach to feeding and will not include information on other similar or related therapy.

TESTIMONIALS

"This was one of the best courses I have ever attended. Erin's presentation was excellent and I appreciated the evidence based focus with relevant clinical application. I would highly recommend this course to anyone interested in feeding." - *Kimberly Richardson*

"There is such a wealth of information in this course. I learned/re-learned so many new things that this could have been a semester-long graduate class. Erin Ross presents information clearly and concisely and in a relatable manner. She is easily approachable for questions, clarifications and discussions. Will be recommending this course to all my "speechies" who work with bottle feeders or tube feeders." - *Emily Tricarico*

LOCATIONS

Please visit our website for suggested hotels

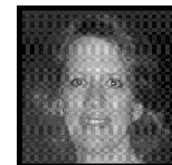
September 15-16, 2017 - New Jersey

Children's Specialized Hospital
New Brunswick, NJ

October 13-14, 2017 - Nebraska

Children's Hospital & Medical Center
Omaha, Nebraska

Erin Sundseth Ross
PhD, CCC-SLP



PRESENTS

The SOFFI MethodSM:
Supporting Oral Feeding
in Fragile Infants
NICU and EI

The National Association of Neonatal Nurses (NANN) has recommended the use of the SOFFI methodSM (developed by Erin Ross) in conjunction with their new feeding guidelines

September 15-16, 2017 - New Brunswick, NJ
October 13-14, 2017 - Omaha, NE

sponsored by



Education Resources, Inc.

Relevant Continuing Education for Therapists by Therapists

www.educationresourcesinc.com

(508) 359-6533 or (800) 487-6530 (outside MA)

COURSE DESCRIPTION

This course provides immediately applicable practical information to help clinicians better identify and treat the factors that impact successful oral feeding of preterm and ill term infants. Utilizing a **multidisciplinary approach**—both in the NICU and after discharge to early intervention through the first six months—the course emphasizes strategies to facilitate infant abilities and develop caregiver feeding skills. **Breastfeeding is emphasized as the best feeding method for infants, with some strategies to support breastfeeding. However, most of the feeding strategies are for bottle feedings, since more infant feeding problems occur with bottle feedings.** The objective is to identify feeding readiness and provide intervention strategies from a framework of normal development. A holistic research based approach integrating the medical fragility of these infants is emphasized, using the BROSS approach and the SOFFISM Method.

COURSE OBJECTIVES

Participants will be able to apply course learning immediately to:

- Identify necessary components of infant development that indicate a readiness to begin and sustain oral feeding, including physiologic, motor and state organization.
- Discuss the development of oral-motor skills in preterm infants.
- Describe the interaction between medical and developmental levels as they relate to feeding readiness and the progression.
- Identify infants who are not following a normal progression.
- Use the BROSS approach to identify the development of oral feeding skills and use the SOFFI MethodSM to guide feeding decisions and intervention strategies.
- Use principles of normal development and developmentally supportive care to facilitate feeding progression, to include contributions of both the family and the **professional team**.

COURSE REQUIREMENTS

Please bring bottles/nipples you use or have questions about for the hands on portion of this course.

Please contact us with any special needs requests: 508-359-6533 or info@educationresourcesinc.com.

SCHEDULE DAY ONE

7:30-8:00	Registration/Continental Breakfast
8:00-9:00	Introduction, Welcome & Family Roles and Expectations for Successful Nurturing and Feeding
9:00-10:00	Feeding as a Developmental Process—Physiologic, Sensory and State Development
10:00-10:15	Break
10:15-11:45	Feeding as a Developmental Process – Oral-motor Development
11:45-12:45	Lunch (on your own)
12:45-1:30	Feeding as a Developmental Process-Across the first year!
1:30-3:00	Medical Issues that Impact Feeding Skills: Chronic lung disease, cardiac defects, oral-Motor deficits, gastrointestinal disorders
3:00-3:15	Break
3:15-4:30	Effects of the NICU Experience: Changing the focus from volume to skill to build a foundation for optimal feeding and growth
4:30-5:15	Developmental Steps to Eating: The BROSS approach

SCHEDULE DAY TWO

7:30-8:00	Continental Breakfast
8:00-10:15	Using the SOFFI Method SM to Guide Decisions Regarding Readiness and Interventions for Infants Not Nipple Feeding
10:15-10:30	Break
10:30-11:45	Using the SOFFI Method SM to Provide Supportive Interventions for Nipple Feeding (1)
11:45-12:45	Lunch (on your own)
12:45-2:30	Using the SOFFI Method SM to Provide Supportive Interventions for Nipple Feeding (2)
2:30-2:45	Break
2:45-4:00	Using the SOFFI Method SM to Provide Supportive Interventions for Nipple Feeding (3)

CREDITS

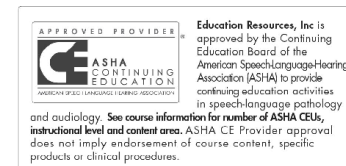
This course meets the criteria for 14.5 contact hours (1.45 CEU's). Approved by the **NJ** Board of Physical Therapy Examiners, and the **PA** State Board of Physical Therapy. Application has been made to the **NE** Chapter of the American Physical Therapy Association.

Application has been made to the Commission on Dietetic Registration for 14.5 CPEUs.

Approved provider by the **NY** State Board of Physical Therapy for 17.4 contact hours.



Approved provider of continuing education by the American Occupational Therapy Association #3043, for 14.5 contact hours (1.45 CEU's) - Intermediate Level Occupational Therapy Process: assessment, intervention. The assignment of AOTA CEU's does not imply endorsement of specific course content, products or clinical procedures by AOTA **NBCOT** professional development provider-14.5 PDU's.



This course is offered for up to 1.45 ASHA CEUs (Intermediate level, Professional area).

This course meets the criteria for up to 14.5 hours toward NANT Certification

This presentation will focus exclusively on the BROSS Approach and SOFFI Method and will not include information on other similar or related therapy.

AUDIENCE

This workshop is designed for individuals with several years experience working with family and staff to support oral feeding for infants in, or just discharged from the intensive care nursery, including speech/language pathologists, occupational therapists, physical therapists and early interventionists. **Level of instruction:** Intermediate to Advanced.

People who have taken Erin Ross' *"Feeding the Most Fragile: From NICU to Early Intervention"* will benefit from the updated research and clinical information and the comprehensive approach. If you have taken her course from Education Resources in the past you can repeat this course for \$300 or take Day 2 only for \$200.

YOUR INPUT IS VALUED

We invite you to share your ideas with us, post a clinical challenge you are currently facing, or share a great therapy tip. Visit our Facebook Page & follow us on Linked In. www.educationresourcesinc.com/blog



