

REGISTRATION

\$435 fee. (group rate 3 or more \$410 must register together)
Deadline for registration is three weeks prior to course. Registration accepted after deadline on a space available basis. Cancellation accepted up until two weeks prior to course, minus an administration fee of \$75.

NO REFUNDS WITHIN TWO WEEKS OF COURSE

Please make check payable and return to:

Education Resources, Inc.
266 Main St., Suite 12 • Medfield, MA 02052
(508) 359-6533 or 800-487-6530 (outside MA)
FAX (508) 359-2959
www.educationresourcesinc.com
Limited enrollment

Complex Neonate - Ferrara

NAME _____

ADDRESS _____

CITY/STATE/ZIP _____

PHONE (H) _____ PHONE (W) _____

PHONE (Cell) _____

Please provide cell in the event of an emergency schedule change

EMAIL _____

EMPLOYER _____

DISCIPLINE _____ SPECIALTY _____

HOW DID YOU LEARN OF THIS COURSE _____

ERI Rewards. I am registering for my 4th course since January 2009 and applying \$100 credit to the tuition.

Please indicate course location attending:

Jan/NV

Mar/NJ

Education Resources, Inc. reserves the right to cancel any course due to insufficient registration or extenuating circumstances. Please do not make non-refundable travel arrangements until you have called us and received confirmation that the course will be held. We are not responsible for any expenses incurred by participants if the course must be cancelled.

I have read your refund policy above and understand.

Cardholder's name & billing address with zip code if different from above.

Amount to be charged _____

Signature _____

I hereby authorize you to charge my: VISA MC DISCOVER

Exp. Date _____ CVV2 code _____

(last 3 digits on back of card)

CREDITS

This course meets the criteria for 13 contact hours (1.3 CEU's). Application has been made to the **NJ** Board of Physical Therapy Examiners, the **PA** State Board of Physical Therapy, and the **NV** State Board of Physical Therapy Examiners. ERI is an approved agency by the PT Board of **CA**.

Approved provider by the **NY** State Board of Physical Therapy for 16.2 contact hours.



Approved provider of continuing education by the American Occupational Therapy Association #3043, for 13 contact hours - Intermediate Level Occupational Therapy Process: assessment, intervention. The assignment of AOTA CEU's does not imply endorsement of specific course content, products or clinical procedures by AOTA.

NBCOT professional development provider-13 PDU's.



Education Resources, Inc is approved by the Continuing Education Board of the American Speech-Language-Hearing Association (ASHA) to provide continuing education activities in speech-language pathology and audiology. See course information for number of ASHA CEUs, instructional level and content area. ASHA CE Provider approval does not imply endorsement of course content, specific products or clinical procedures.

This course is offered for up to 1.3 ASHA CEUs (Intermediate level, Professional area).

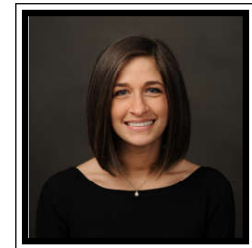
FACULTY

Louisa Ferrara, PhD, CCC-SLP, BCS-S, CNT has over 10 years of clinical experience working with neonates, medically-fragile infants and children with a myriad of complex medical/developmental needs. Dr. Ferrara has worked in numerous pediatric settings, most recently as a Neonatal/Pediatric Specialist in Feeding and Swallowing Disorders at NYU-Winthrop Hospital, New York. Dr. Ferrara developed the NICU Feeding Program in this Level III NICU, and continues to serve as Program Manager. Dr. Ferrara completed her Doctorate degree in Speech and Language Pathology from Adelphi University. She received her Board Certification in Swallowing and Swallowing Disorders through ASHA and recently became a Certified Neonatal Therapist through NANT. Dr. Ferrara's published research has focused on the swallowing mechanism in neonates under various conditions, as well as the use of VFSS and FEES as diagnostic tools. Louisa has published in high-standing, peer-reviewed journals and lectures nationally, on various topics related to feeding readiness in preterm infants, dysphagia management, swallowing-respiratory coordination and early feeding milestone acquisition.

Disclosure: Financial: Louisa Ferrara receives an honorarium from Education Resources for this course. **Non-Financial:** She has no relevant non-financial relationship to disclose.

Therapeutic Management of the Complex Neonate:

Cardiac, Respiratory,
Neurologic Challenges in the
NICU, PICU, SICU and
EI Settings



Louisa Ferrara

PhD, CCC-SLP, BCS-S, CNT

January 19-20, 2019 - Las Vegas, NV

March 15-16, 2019 - New Brunswick, NJ

Stay Tuned!

Your enhanced ERI experience is on its way!

A new look and new interactive website, reflecting our tradition of excellence, and our commitment to you and your future!



www.educationresourcesinc.com
(508) 359-6533 or (800) 487-6530 (outside MA)

COURSE DESCRIPTION

This course will provide the advanced clinician with in-depth knowledge of the developmental consequences and physiologic obstacles faced by infants born with **Cardiac, Respiratory and/or Neurologic Diagnoses**. Information for both full-term and pre-term infants will be provided, along with the current literature reporting upon these infants' long-term outcomes. Functional information will be a strong focus to ensure the audience can immediately apply strategies to use with their caseloads. Topics include neuro-developmental care for handling, positioning, oral care, feeding/swallowing and sensory processing strategies. Therapy frequency and intensity recommendations will be discussed. A strong focus is on developmental appropriateness, research efficacy and parent-training. The use of videos and real life experience makes this course engaging, interactive and functional to any provider looking to make real progress with the children on their caseload with **complex medical issues**.

COURSE OBJECTIVES

Upon completion of this workshop, participants will be able to:

1. Describe the in-depth anatomy and physiology of normal and disordered functions of the Cardio, Respiratory and Neurologic Systems, along with the pros and cons of various medical interventions.
2. Explain how each medical disorder negatively affects neuro-development and the attainment of typical milestones in pre-term and full-term infants.
3. Analyze the research reporting on long-term outcomes for infants with complex medical histories.
4. Identify and apply appropriate strategies, across all therapy domains, to improve short-term and long-term outcomes in these infants.
5. Discuss the importance of creating a "team" for all infants, with the main focus being a strong collaboration with parents and other medical providers.
6. Incorporate theories of neuro-developmental care and family-centered care into clinical practices.

AUDIENCE

Occupational Therapists, Physical Therapists, Speech Language Pathologists and Special Educators working in the NICU, PICU, SICU and Early Intervention.

Please contact us with any special needs requests. info@educationresourcesinc.com or 508-359-6533

SCHEDULE DAY ONE

- 7:30-8:00 Registration/Continental Breakfast
- 8:00-9:00 Typical Development of the Pulmonary System
- Anatomy and physiology:
 - 1st, 2nd and 3rd trimester, Full-term through 3 months of age
- 9:00-10:00 Respiratory Devices, strategies to optimize therapy sessions and developmental outcomes when devices are necessary.
- Mechanical Ventilation, Nasal CPAP, HiFlow Nasal Cannula, etc.
 - Respiratory Therapist: inter-professional collaboration
- 10:15-12:00 Each condition (**A-C**) will have 4 sections
1. Disordered Physiology and Expected Bedside Presentation
 2. Diagnostic Assessments and Medical Interventions
 3. Impact on Development, with preventative strategies.
 4. Long Term Developmental Outcomes
- A. Neonatal Respiratory Conditions**
1. Full Term Pathology (i.e. meconium aspiration, PPHN, pneumothorax, pleural effusion, etc.)
 2. Pre-Term Pathology (i.e. CLD, BPD, etc.)
 3. Congenital Anomalies (i.e. pulmonary airway malformation, diaphragmatic hernia, Choanal atresia, lobar emphysema, etc.)
 4. Other (i.e. tracheostomy, neuro muscular disorders, etc.)
- 1:00-1:30 Typical Development of the Neurologic System
- Anatomy and physiology:
 - Each trimester, Full-term- 3 months
- 1:30-3:00 **B. Neonatal Neurologic Conditions**
1. Congenital i.e. neural tube defects, cerebrovascular malformations, etc.)
 2. Acquired (i.e. IVH, HIE, PVL, post hemorrhagic hydrocephalus, etc.)
- Physiology of Seizures and Abnormal Tone
- 3:15-4:00 Prematurity: Impact on Postnatal Brain Development
- Basic Science of Neural Enrichment and Deprivation
 - Environmental Inputs
 - Early Relational Trauma & Neurobiological Alterations

SCHEDULE DAY TWO

- 7:30-8:00 Continental Breakfast
- 8:00-9:00 Typical Development of the Cardiac System
- Anatomy and physiology:
 - Each trimester, Full-term - 3 months
- 9:00-10:00 Physiology of Heart Failure
Physiology of Pulmonary Edema
- 10:15-12:00 **C. Neonatal Cardiac Conditions**
Conditions will be Classified by:
1. Cyanotic: Congenital Heart Defects (i.e. Tetralogy of Fallot, Tricuspid atresia, Pulmonary atresia, etc.)
 2. Acyanotic (i.e. VSD, PDS, etc.)
 3. Obstructive I (i.e. aortic stenosis, aortic coarctation, hypoplastic left lung syndrome, etc.)
- 1:00-3:00 Overview of Neuro-Developmental Care and Appropriate Intervention Strategies
- Handling/Positioning
 - Sensory Processing
 - Pre-Feeding Oral Care
 - Feeding/Swallowing
- 3:15-4:00 Parent Education to Optimize Family-Centered Care and Neuro-Protection
- Strategies to implement models
 - Case studies/scripted language

**Lunch will be from 12:00pm-1:00pm each day.
Two 15 minute breaks scheduled each day**

COURSE LOCATIONS

Please check our website for suggested accommodations

January 19-20, 2019 - Nevada

Summerlin Hospital Medical Center
Las Vegas, NV

March 15-16, 2019 - New Jersey

Children's Specialized Hospital
New Brunswick, NJ

